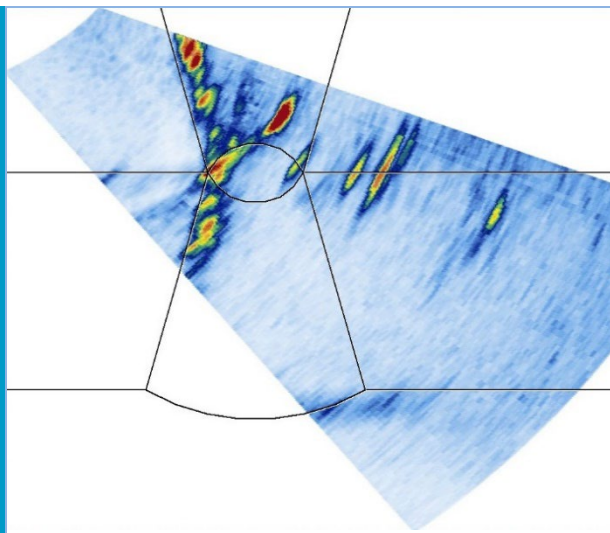




NUCLEAR  
RESEARCH  
INSTITUTE

## Operational Support of Power Facilities Department Integrity and Technical Engineering Division



## Development and Qualification NDT/NDE in Nuclear Energy and Industry

Phased Array Data Analysis (Crack Indication)

### Value for customers

- Cooperation on international projects in the field of machine learning and artificial intelligence
- Cooperation with NDT/NDE personnel at an international level
- Experienced personnel in NDT/NDE (nuclear energy and industry) - Level 3
- Access to high-tech NDT/NDE as a member of international organizations

### Applications

- Inspection of critical NPP components
- Weld inspection (e.g., dissimilar welds and coating)
- Detection of volumetric and planar defects (porosity, LOF, cracks)
- Parts where RT (radiography testing) is limited (e.g., access from one side of the part)

### What we offer

- Supervision of NDT/NDE personnel and inspection systems
- NDT/NDE procedures in accordance with customer standards and regulations
- Development and qualification of ultrasonic testing (PAUT, TFM/FMC and TOFD)
- Manufacturing of Virtual Mockups in .UVDData format - UltraVision (only EPRI members)

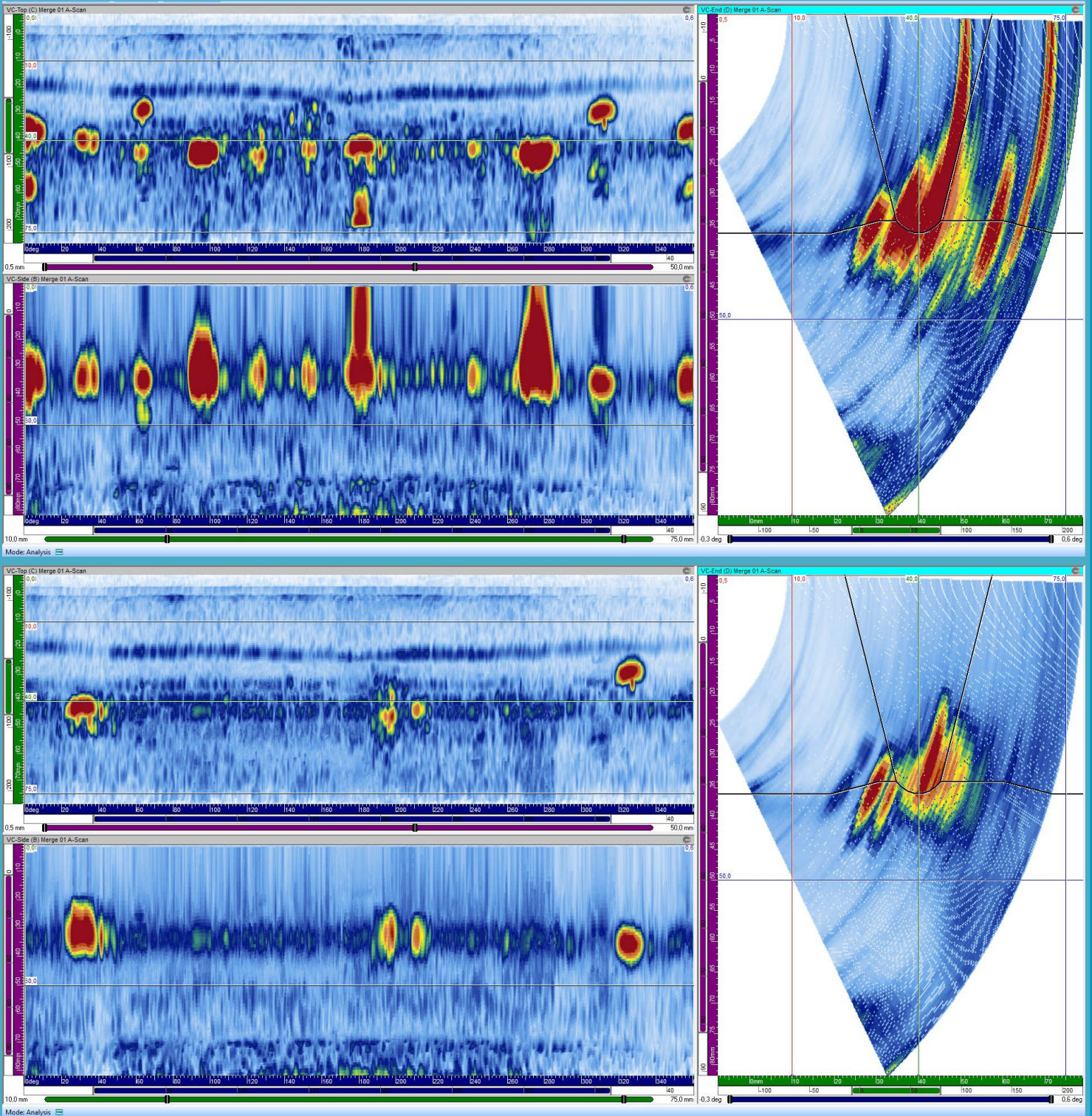
### Contact details

Daniel Dopjera  
Diagnostics and Measurement Expert  
phone: +420 724 685 140  
e-mail: daniel.dopjera@ujv.cz

ÚJV Řež, a. s., Hlavní 130, Řež, 250 68 Husinec,  
Czech Republic  
phone: +420 266 172 000, e-mail: sales@ujv.cz  
Integrity and Technical Engineering Division  
phone: +420 266 173 445, e-mail: integrity@ujv.cz  
[www.ujv.cz](http://www.ujv.cz)

## Our references

- NDT inspections at NPPs Dukovany and Temelin, Czech Republic
- International projects in the development of specific ultrasonic inspections
- UT procedures for testing dissimilar welds at NPP Dukovany and Temelin
- Manufacturing of Virtual Mockups for the qualification of NDT/NDE personnel



Original PAUT data on the top and virtual mockup on the bottom (modified .UVDData)